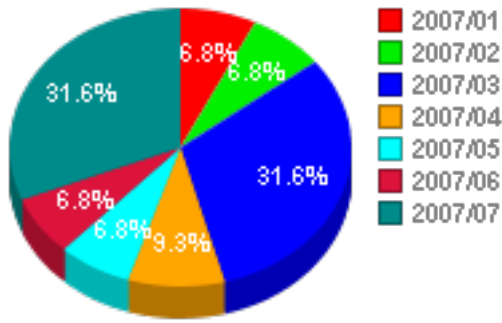


Elements of Dashboard Reports

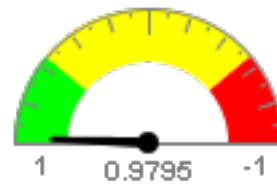


Pie charts can be drawn in various ways: with/without legends, labeling using percentages, sum figures, and category labels.

Management Dashboards

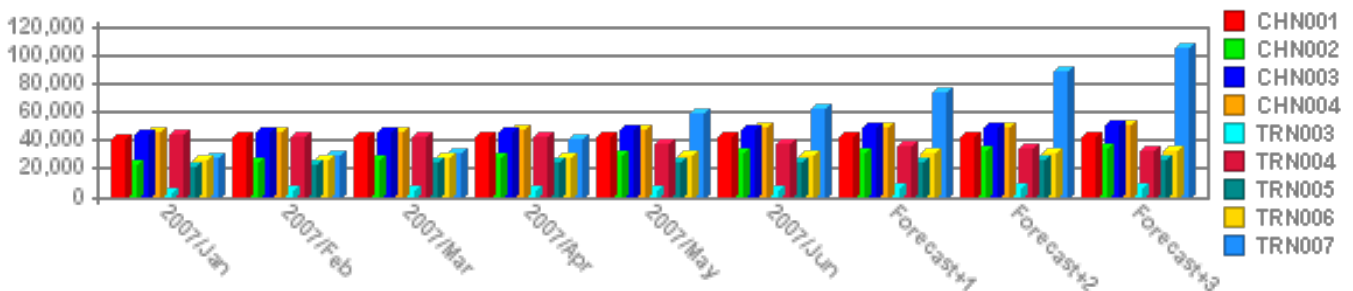
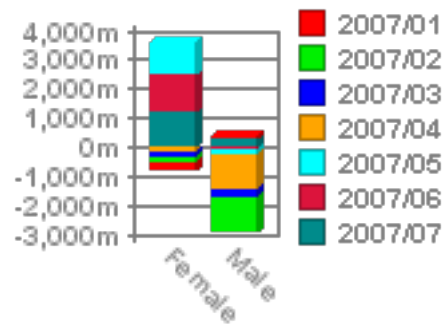
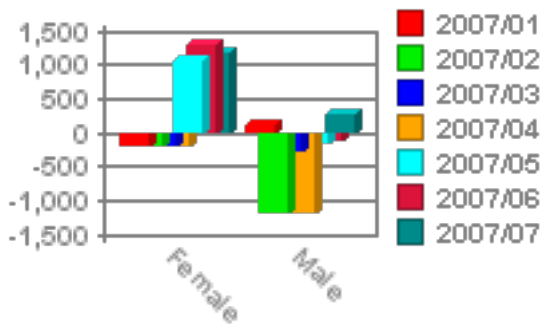
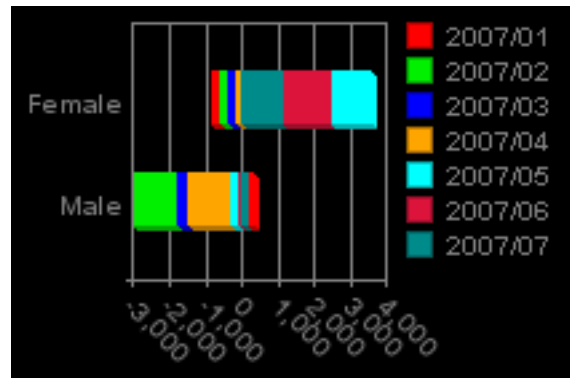
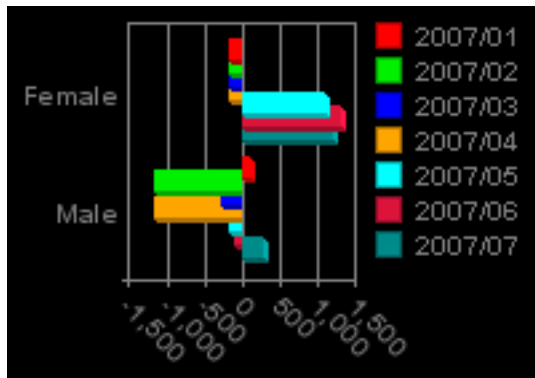
Dashboards provide up-to-date management information for executives and managers. Literally, dashboards resemble the same kind of automobile dashboards. Dashboards consist of essential current business indicators showing where they are and where they are headed. It is noted that charts shown in this dashboard example report are directly drawn based on data extracted from Rosella DBMS in real-time.

Gauge charts are used to visualize business indicators. Business indicators are normally numbers computed using predictive models and mathematical formulas. Numbers can range between min and max as shown in the figure below.



Diverse Bar Charts

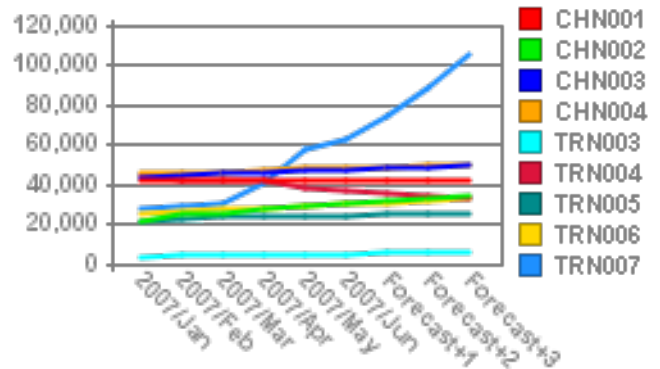
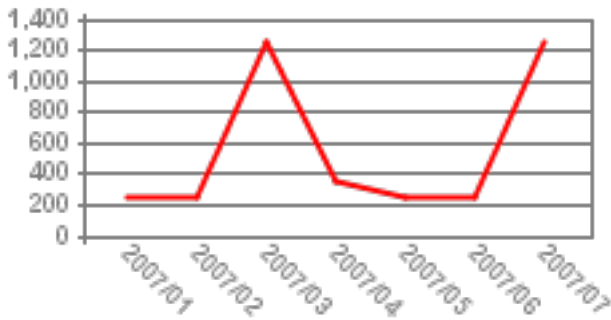
By far the most commonly used charts in business reports are bar charts. Bar charts can take various forms. Charts can be drawn vertically or horizontally. Categorical information may be shown in side-by-side or in cumulative stacked bars.



Elements of Dashboard Reports

Line charts - Alternative to bar charts

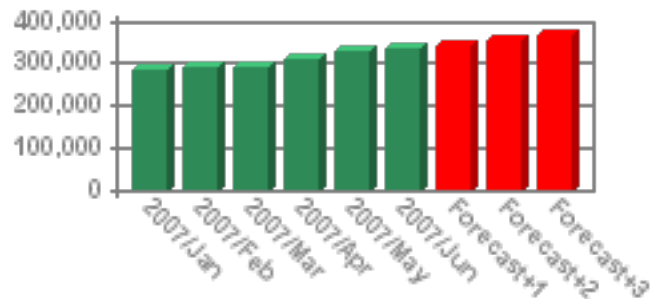
In essence, line charts show the same information as bar charts. However line charts are normally used for time-series information. Line charts can be drawn for categorical comparison as shown in the right chart;



Predictive time-series modeling

Predictive modeling develops models based patterns discovered from past data. Then predictive models are applied to predict future events.

The figure in the right shows a time-series chart. The first six terms are recent figures. The last three terms are predicted values by a regression model automatically developed based on the first six terms.



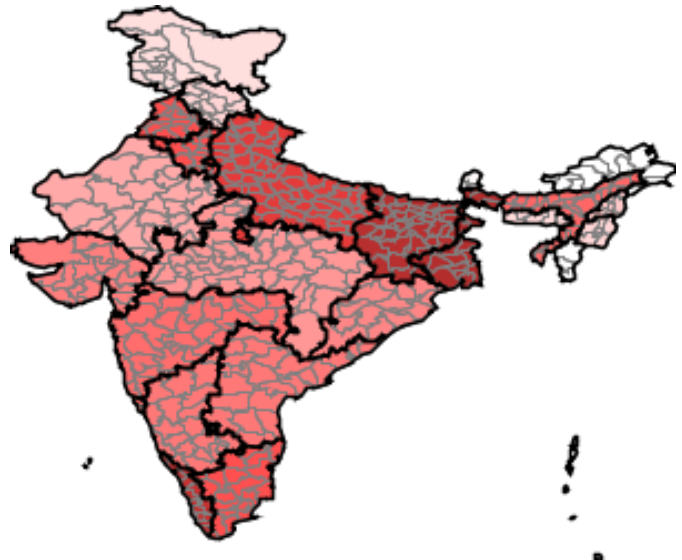
Groupby Tables

Groupby summations tables are often used in support of charts. The table at the left is based on data extracted from database. It is generated in real-time. As a matter of fact, all figures and charts in this paper are produced in real-time.

Region	Channel	Forecast 1	Forecast 2	Forecast 3
WEST	TRN007	\$74,919.28	\$89,173.35	\$106,139.38
WEST	CHN002	\$32,854.29	\$34,159.36	\$35,416.38
EAST	TRN003	\$6,620.69	\$6,837.85	\$7,048.32
EAST	CHN004	\$15,122.53	\$15,761.67	\$16,427.83
EAST	TRN006	\$31,856.83	\$32,774.36	\$33,718.31
EAST	TRN005	\$26,037.07	\$26,434.10	\$26,825.26
WEST	CHN003	\$49,629.39	\$50,307.52	\$50,976.62
WEST	CHN001	\$43,124.57	\$43,176.98	\$43,229.33
WEST	CHN004	\$34,937.46	\$34,944.55	\$34,951.63
EAST	TRN004	\$37,177.76	\$35,660.96	\$34,076.71

Map Charts

Map charts provide intuitive understanding of regional statistics. Map charts are based on GIS (Geographical Information Systems). The following chart shows population densities of Indian states.



This pdf document was produced in real-time from StarProbe Business Intelligence Server powered by embedded Rosella DBMS. iText was used in PDF production. iText is an open source Java package available from "<http://www.lowagie.com/iText/>".